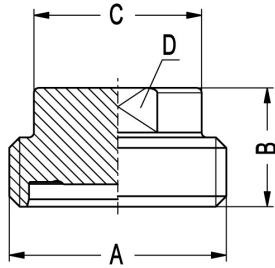
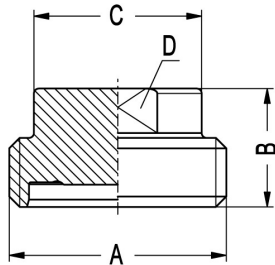


**Aseptic-/Hygienic-Screwed pipe connection DIN 11853-1 + DIN 11864-1**
**Art.No**
**EUR**
**Art.No**
**EUR**
**Blind threaded ferrule DIN**

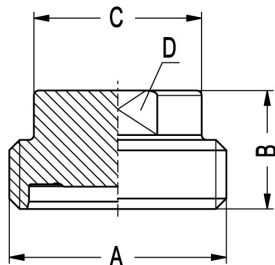
DN	A	B	C	D		AISI316L-1.4404	AISI316L-1.4435		
10	Rd 28x1/8"	24	22	SW 17		477430	35,50	470930	Enquiry
15	Rd 34x1/8"	24	22	SW 17		477431	36,20	470931	Enquiry
20	Rd 44x1/6"	24	22	SW 17		477432	32,80	470932	Enquiry
25	Rd 52x1/6"	24	40	SW 27		477433	34,30	470933	Enquiry
32	Rd 58x1/6"	24	40	SW 27		477434	36,20	470934	Enquiry
40	Rd 65x1/6"	24	40	SW 27		477435	38,80	470935	Enquiry
50	Rd 78x1/6"	24	40	SW 27		477436	43,90	470936	Enquiry
65	Rd 95x1/6"	28	48	SW 32		477437	51,80	470937	Enquiry
80	Rd 110x1/4"	28	48	SW 32		477438	75,20	470938	Enquiry
100	Rd 130x1/4"	30	48	SW 32		477439	90,50	470939	Enquiry


**Blind threaded ferrules DIN 11853-1 and DIN 11864-1 have the same dimensions.**
**Blind threaded ferrule ASME (AISI316L-1.4404)**

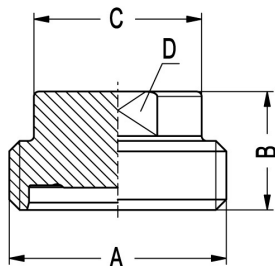
DN	A	B	C	D			AISI316L-1.4404	
1"	Rd 52x1/6"	24	40	SW 27			477503	48,10
1,5"	Rd 65x1/6"	24	40	SW 27			477504	54,90
2"	Rd 78x1/6"	24	40	SW 27			477505	60,60
2,5"	Rd 95x1/6"	28	48	SW 32			477506	68,50
3"	Rd 110x1/4"	28	48	SW 32			477507	87,90
4"	Rd 130x1/4"	30	48	SW 35			477508	103,20


**Blind threaded ferrules DIN 11853-1 and DIN 11864-1 have the same dimensions.**
**Blind threaded ferrule ASME (AISI316L-1.4435)**

DN	A	B	C	D			AISI316L-1.4435	
0,5"	Rd 28x1/8"	24	22	SW 17			477601	Enquiry
0,75"	Rd 34x1/8"	24	22	SW 17			477602	Enquiry
1"	Rd 52x1/6"	24	40	SW 27			477603	Enquiry
1,5"	Rd 65x1/6"	24	40	SW 27			477604	Enquiry
2"	Rd 78x1/6"	24	40	SW 27			477605	Enquiry
2,5"	Rd 95x1/6"	28	48	SW 32			477606	Enquiry
3"	Rd 110x1/4"	28	48	SW 32			477607	Enquiry
4"	Rd 130x1/4"	30	48	SW 32			477608	Enquiry


**Blind threaded ferrules DIN 11853-1 and DIN 11864-1 have the same dimensions.**
**Blind threaded ferrule ISO (AISI316L-1.4404)**

DN	A	B	C	D			AISI316L-1.4404	
21,3	Rd 44x1/6"	24	22	SW 17			477731	45,90
26,9	Rd 52x1/6"	24	40	SW 27			477732	48,10
33,7	Rd 58x1/6"	24	40	SW 27			477733	49,40
42,4	Rd 65x1/6"	24	40	SW 27			477734	54,90
48,3	Rd 78x1/6"	24	40	SW 27			477735	60,60
60,3	Rd 95x1/6"	28	48	SW 32			477736	68,50
76,1	Rd 110x1/4"	28	48	SW 32			477737	87,90
88,9	Rd 130x1/4"	30	48	SW 32			477738	103,20


**Blind threaded ferrules DIN 11853-1 and DIN 11864-1 have the same dimensions.**